



Interim Report

Engagement Process

A New School for Ryton Park



April 09

CONTENTS PAGE

| | |
|---|---------|
| 1. Executive Summary | Page 3 |
| 2. Background | Page 5 |
| 3. Purpose | Page 6 |
| 4. Methodology | Page 7 |
| 5. Findings | Page 11 |
| 6. Written Responses | Page 20 |
| 7. Recommendations | Page 22 |
| 8. Next Steps | Page 23 |
| Appendices | |
| I. Feed back from Information Evening | Page 25 |
| II. Plan of Engagement | Page 29 |
| III. Questionnaire/Survey | Page 30 |
| IV. Maps | Page 34 |
| V. Written Comments | Page 35 |
| VI. Entries for the Picture Competition | Page 42 |

Executive Summary

The building of a new school is an exciting time, with the opportunity to provide a facility that is equipped and tailored to the needs of the community. The education of children is paramount, but there is scope for this project to provide much more and become a valuable resource for the wider community. This report is hoped to be the foundation of further discussion between Nottinghamshire County Council and all the represented groups in the wider community throughout the project to the opening of the facility.

Nottinghamshire County Council in response to concerns was eager that the community feel fully engaged in the process, therefore the Council appreciated the offer by Manton Community Alliance to undertake this engagement process. The process has been difficult to execute because of the tight time restraints, however in the four weeks available over 3,500 people had the opportunity to be involved in the engagement process. Had more time been available then a more thorough approach could have been implemented. Nottinghamshire County Council has been kept fully informed throughout the process. As questions have been raised there has been opportunity to reply through the Manton Community Alliance website. This will continue to be updated through to the completion of the school.

The general consensus of the community is that it is great that the County Council want to invest in our Children's future education and provide the community with such a facility. The key question is how will it come into being. This process has shown there is a strong sense of community scepticism that the County Council truly wants to involve them in what will be in essence a defining moment which will affect the future generations of our community. This is based on a perceived lack of trust, following the merger of the schools. This engagement process provides an opportunity to rebuild trust and a platform for future channels to involve the wider community in this and future projects.

The purpose of this engagement process was not to choose a location for the new school, but rather to gather the community views about what the new school should include and what potential services the community may desire. It was also an opportunity for those involved to hear the views of different parts of the community and what they would want to be able to influence. There is strong evidence that the extended services were vital in the community and services such as Breakfast Club and after school activities should be transferred to the new school and possibly extended. The results show people would like to be able to access community services through the new school, however location would be crucial so that the community could access them.

The results of this piece of work reveal that many people genuinely want to be involved in influencing the new school from design to community services. The

majority of the comments about location are based on the two sites preferred by Nottinghamshire County Council and not as any endorsement or mandate relating to all ten sites referred to in the recent feasibility study carried out by Nottinghamshire County Council. However location was still a significant topic with many giving positive feedback about the earmarked sites, whilst others asked why they could not influence the location of the new school.

Some of the key areas of discussion that arose regarding the preferred locations were:

- The centrality of the locations
- Distance between sites and many residents' homes.
- Access issues
- Transport arrangements
- Congestion
- The close proximity of other schools

We believe that this report gives the County Council a great opportunity to respond to a community that wants to be involved in the project and is willing to listen to all the information and reasoning behind the decisions made as long as their views have been considered.

Some hold the view that the County Council 'knows best'. The County Council working through Manton Community Alliance believe that this positive exercise is going some way to dispel this view. It presents future opportunities to involve the wider community further.

Background

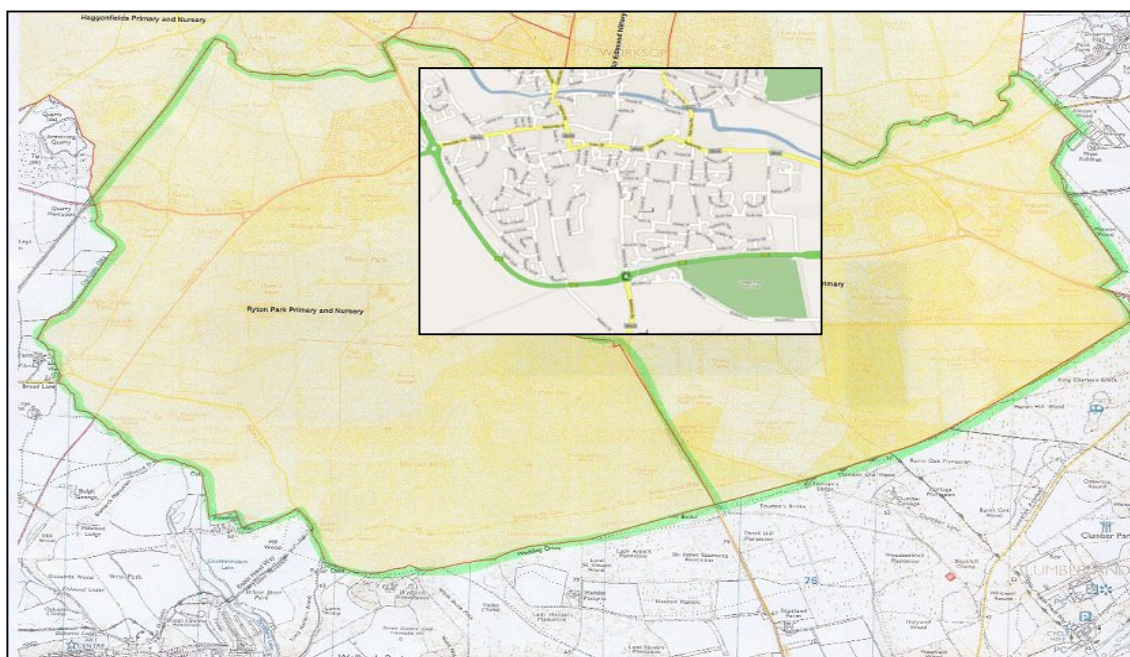
In January 2009 New Manton Primary School merged with Ryton Park Primary School following New Manton Primary being put into special measures. As the schools sites are two miles apart, situated on Memorial Avenue and South Avenue, and both buildings were in need of renovation, it was decided to build a brand new school and £8.4 million has been earmarked for the project. However the funding has to be spent by September 2011. The catchment area covers the south end of Worksop. The main residential area involved is shown inset in the map below from Water Meadows on the left to the Town Centre and Manton on the right. (Figure 1)

During the school merger consultation meeting in June 2007 the County Council made a commitment that all concerned would be able to have a say and influence the development of the new school. This was in response to a feeling of frustration due to a lack of information and dialogue with the community during the process that led to the merger of the schools.

At a meeting of the Ryton Park Stakeholder Reference Group held on 12 March 2009, Manton Community Alliance volunteered to independently engage with all parties and open up channels of communication for views, suggestions and questions to be aired. This would facilitate a conversation between the concerned parties, enabling trust to be nurtured and an inclusive approach to the undertaking of a significant community asset. Nottinghamshire County Council warmly accepted this.

Map of catchment area

Figure 1



Purpose

The purpose is to engage with the wider community about their views and ideas about the new school. The County Council were keen to open up lines of communication throughout the entire process, from these initial stages through to the opening of the school. This was an opportunity to forge greater understanding and trust between the County Council and the Community. Nottinghamshire County Council had a statutory duty to identify a suitable site for the new school. Therefore this exercise was not to consult on the location as such, although comments were welcomed about the proposed sites, but the engagement was more about what the community would like to influence in the school and the possible utilisation of the school for the community. It is also to consider the potential for other agencies and service providers to enhance the extended services of the new facility.

It was also an opportunity for opinions to be aired and for responses to be made, to see the priorities of the community as a whole. The entire process will have an ongoing cycle of three stages that will be present throughout. ^(Figure 2)

Stages of the engagement process:

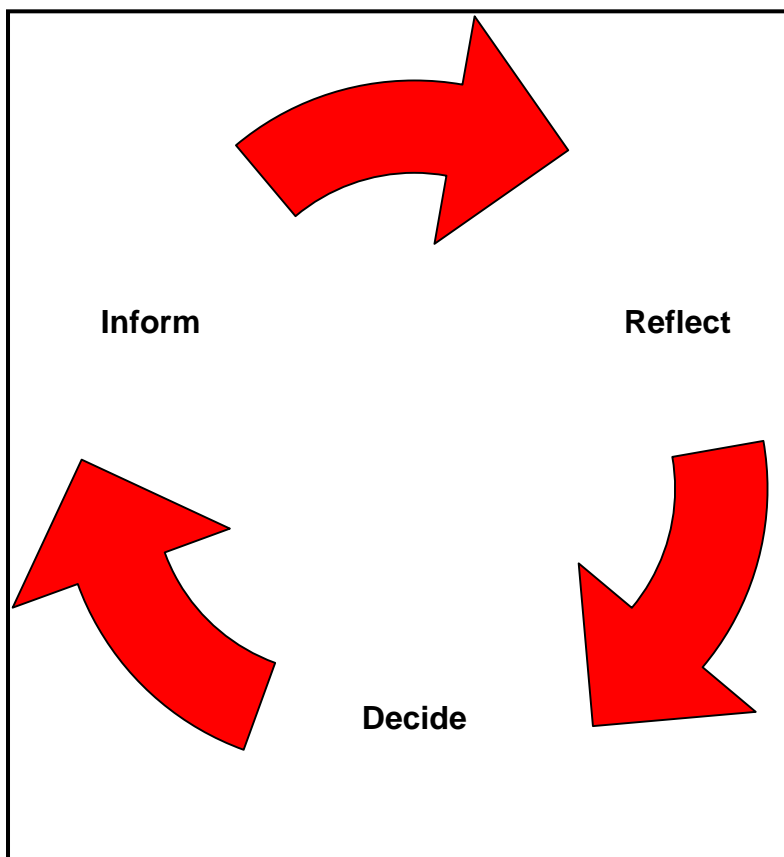


Figure 2

Methodology

Manton Community Alliance designed a plan for the engagement process to be implemented between the 18th March and 22nd April, which was the available time frame (See Appendix 2). The starting point for gathering the views of the community began with an Information Evening at The Crossing on Wednesday 18th March. Parents were informed about the meeting by letter through school, the community by notices, information points and word of mouth. This was an opportunity for all concerned to gain information about the proposals for the new school, the finance available, time frame and proposed locations. More importantly this was an opportunity to open up dialogue between the service providers and the community about the issues that they would like to influence. During the meeting Manton Community Alliance were asked to facilitate an interactive exercise that enabled everyone to voice his or her views. Each table was furnished with three types of stickers arrows, hearts and speech bubbles. The following instructions were given:

- On the heart shape stickers state three positives about the proposed sites,
- On the arrows state one thing you would like to influence about the new school
- On the speech bubbles write questions or comments

At the end of the exercise a show of hands took place to gauge the mood of those present about the two proposed locations preferred by Nottinghamshire County Council. The majority indicated that out of the two remaining sites the Old Hartland site was preferred to Newgate Street. The information gathered from the information evening was used as a basis for choosing the method and the questions on the survey. Due to the time constraints it was necessary to choose methods that would reach a wide sample and would be easy to implement.



The method chosen to gather views was a three pronged approach which included a survey, website and SMS text messaging. Information was paramount so a large map (120 x 66cm) showing all of the sites was assembled showing the ruled 'out' sites in red and those still 'in' in green. There was an information key showing the location of the sites and their status and the reasons for the status. The criteria for the new school were also displayed on the map.^(See Appendix 4) This was taken to all the information stands and events. It is estimated that at least 3,500 people had an opportunity to be informed and to take part in the engagement project. Table 1 below outlines the makeup of this estimate (It is a given that there will be some overlap).

Table 1

| Engagement Activity/Method | Numbers contacted (Some figures are reserved estimates) |
|--|--|
| Information Evening | 100 adults and 20 children |
| School view point stands | 800 |
| Paper Based Survey with free post envelope | 700 |
| Survey posted to homes around proposed sites | 100 |
| Easter Fun Day and Community Events | 2,000 |
| Manton News Letter | 3,000 |
| SMS Text Message | 567 |
| Email Mail Shots | 170 |
| Parent and Toddler Groups | 35 |
| Total | 7,492 |

MCA website was also used but number of visits are not quantifiable.



**SCHOOL ENGAGEMENT
STAND AT MCA
EASTER FUN DAY
ATTENDED BY MORE
THAN 2000 PEOPLE
(4TH APRIL 2009)**

It was decided to distribute the survey in a variety of ways to ensure wide spread participation from a range of groups;

- Information points at schools (including other Primary Schools in the catchment area)
- Visits to Parent and toddler groups, and nurseries.
- Letters to every parent with a child at school
- SMS reminders directing parents to online information and survey
- Distribution at events such as the Easter Fun Day and Easter Parade.
- Door to Door in proposed locations

Copies of the survey with free post envelopes and a picture competition for each child were distributed to parents and teachers as the schools closed for Easter holidays. In view of the large number of migrant workers in the area a copy of the survey was made available in Polish by Ryton Park School.

The website was another tool that was used. We dedicated a section of the MCA website to this engagement exercise which allowed people to complete the survey online, while also providing a point of regular feedback and answers to questions.

This part of the website was promoted in the latest issue of the Manton Newsletter which was delivered to over 3,000 households, and the link was also sent by SMS (text) to all Ryton Park parents/guardians. This part of the website will remain in place to assist information and communication until the school is eventually built.

Alister Shaw (Deputy Manager at MCA) sits on the Bassetlaw LSP Children & Young People Group. He brought the new school development to the attention of the group at a meeting on Monday 23rd March 2009. Members of this group were encouraged to contribute to the wider discussion about the new school and the part it will play in the wider community.

The discussion about the new school was also raised at the Manton Children and Young People's Network, which is a strategic body that has over 60 different agencies working together.

The link to the online survey was emailed to all MCA issue group members (email list) which targets front line workers and managers of all local service providers and agencies as well as residents involved. Partner agencies of the MCA Board were emailed requesting that they provide a response on behalf of their organisations. Nottinghamshire County Council were kept fully informed throughout the process and participated by providing answers to the questions asked to be posted on the MCA website.

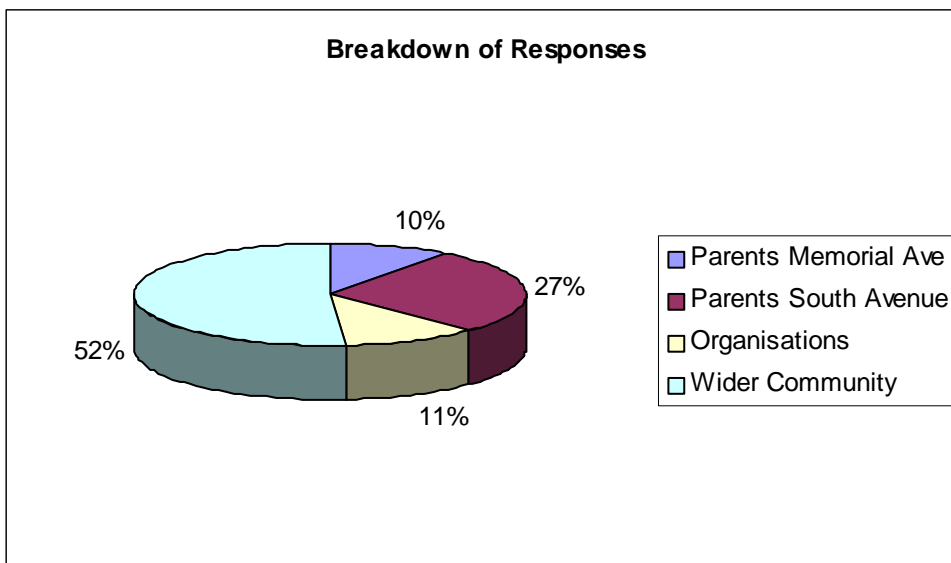
Groups targeted during this stage of the engagement process.

- Parents/Guardians of pupils
- Residents of wider community and catchment area
- Service Providers
- Neighbouring Primary Schools
- Members of Bassetlaw LSP Children and Young People group
- Members of Manton Children and Young People Network
- Frontline workers and managers of local agencies
- Partner agencies of Manton Community Alliance
- Bassetlaw District Council Senior Managers and Ward Councillors

Findings

The time constraint meant that there could not be a blanket approach so that everyone in the catchment could be given the opportunity to have a say. However during the period of engagement around 3,500 people had opportunity to take part and register their views. Of this 1,000 were direct approaches. Over 700 paper copies of the survey were distributed over a two-week period with 11% being returned. In total there were 99 completed surveys, 37 % of completed surveys were from parents of Ryton Park Primary School. A breakdown is shown in Chart 1 below.

Chart 1



It is important to note that throughout the engagement process many voiced a feeling of futility in participating in the process. This was based on previous experiences, and a perception that decisions are made that they can not influence.

Chart 2 – Ratio of School Parents who Responded from both Ryton Park School Sites

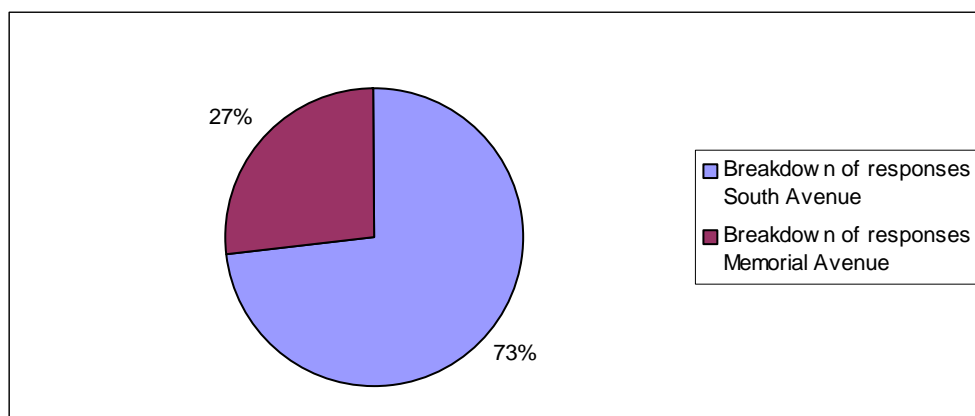


Chart 2 shows the ratio of parents who responded from the two Ryton Park School sites. Just over a quarter of all responses from Ryton Park parents were from the Memorial Avenue site with almost three times as many parents from the Manton site responding. These figures may reflect the level of feelings expressed by many parents during the process. Some did not feel able to comment or thought that there was little point in making the effort. There is a proportion who felt that it had no bearing on them as their child would have already left and gone to the Secondary School.

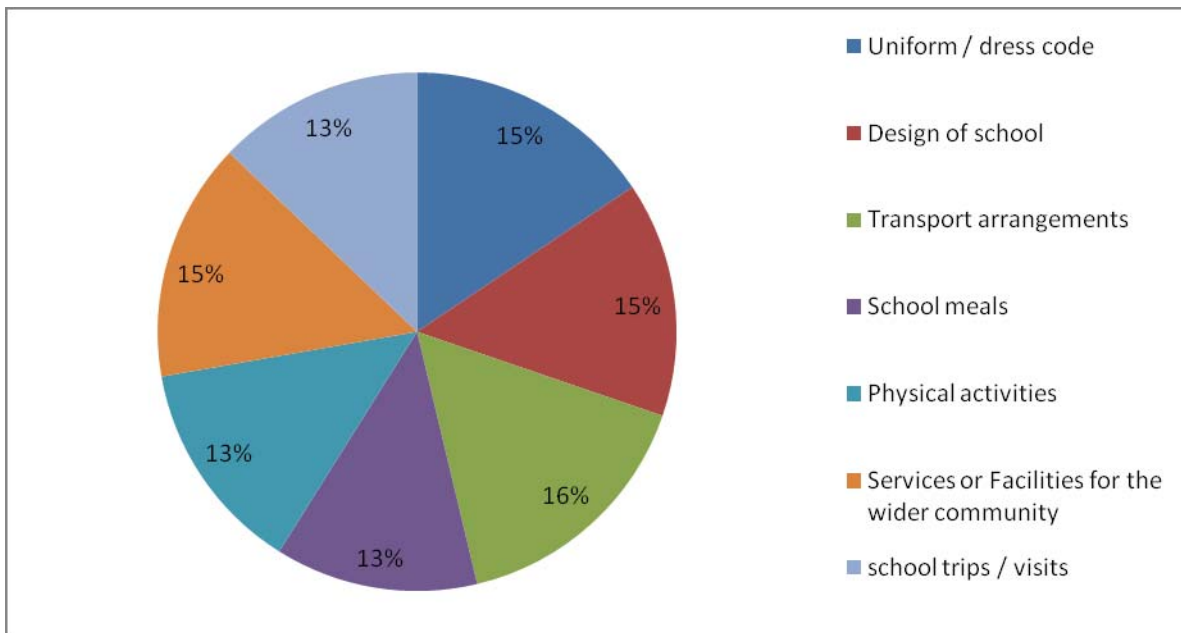
There were responses across the age bands with the majority being between 31-50 years, closely followed by 19-30 years

All comments about location are to be seen in the context of Nottinghamshire County Council's two preferred sites which are Bassetlaw Learning Centre on Newgate Street (Site No. 6) and the old Portland/Hartland Site on Sparken Hill (Site No.7) (See Appendix 3 - Page 32) rather than an endorsement or mandate relating to all the sites referred to in the Nottinghamshire County Council's feasibility study unless otherwise stated.

Q1. What should local people be able to influence about the new school?

There was a general consensus that the majority of those who responded felt that they should be able to influence the majority of the topics listed on the survey. ^(Chart 3) However because of the concerns regarding the distance to one of County Council's proposed locations, transport arrangements was highlighted as an important issue the respondents wanted to influence. This was closely followed by involvement in the design and uniform for the New School. On a par with these priorities were services or facilities for the wider community. There were some respondents particularly residents who lived near the County Council's preferred sites who felt they should not be able to influence what was available in the new school, as they did not consider themselves to have a vested interest.

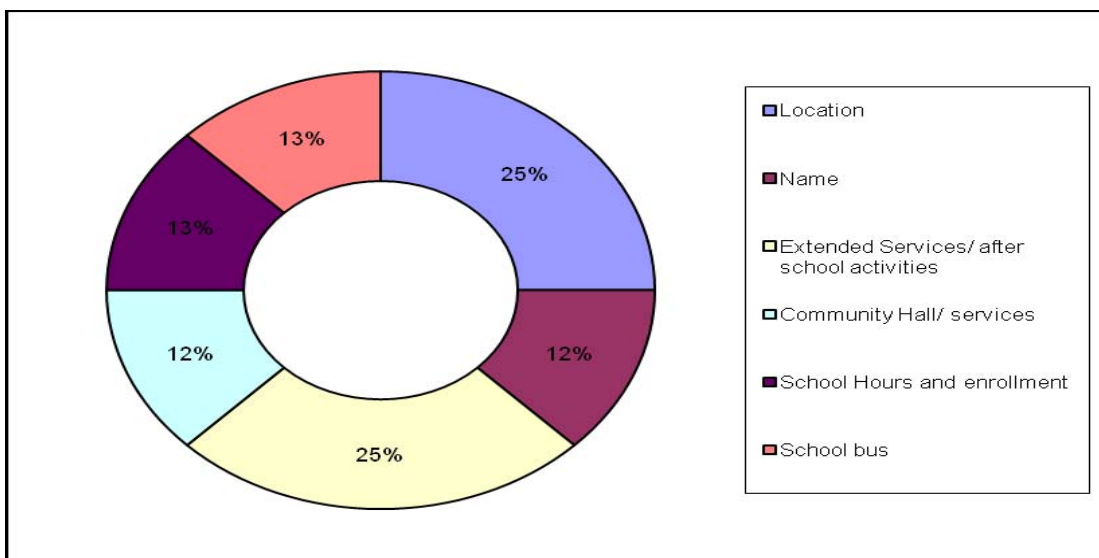
Chart 3: Areas of proposed influence



There were a number of other issues that the community would like to have some influence over. The leader by far was the location of the new school and also the range of extended services available such as Breakfast club and after school activities. Other items mentioned were:

- The name of the School,
- School hours
- Community services to be included.

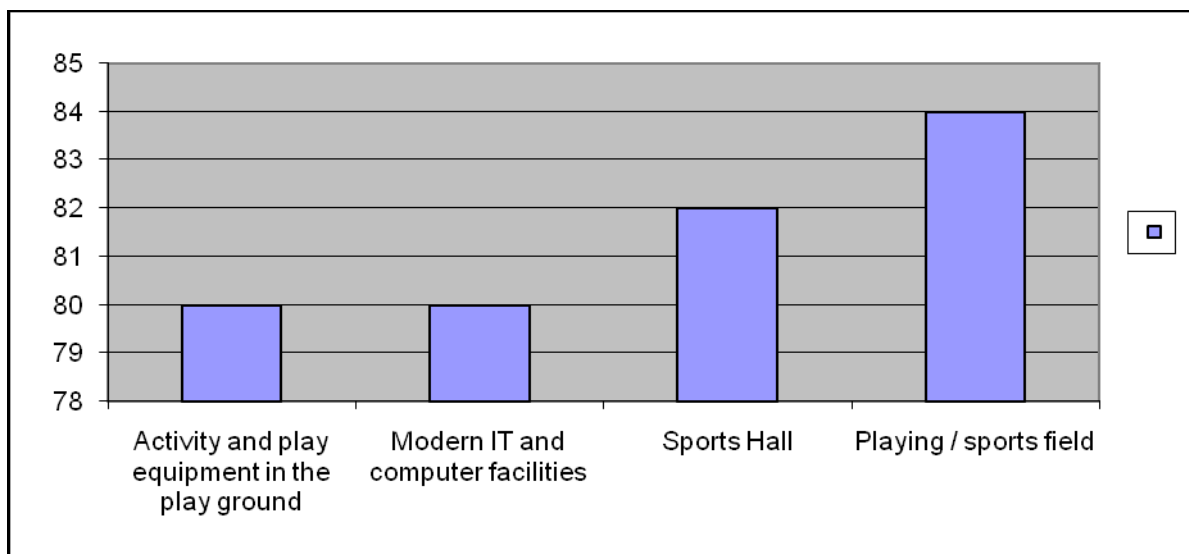
Chart 4: Other areas of proposed influence



Q2. What is there in the PRESENT schools that you would like to have in the NEW school?

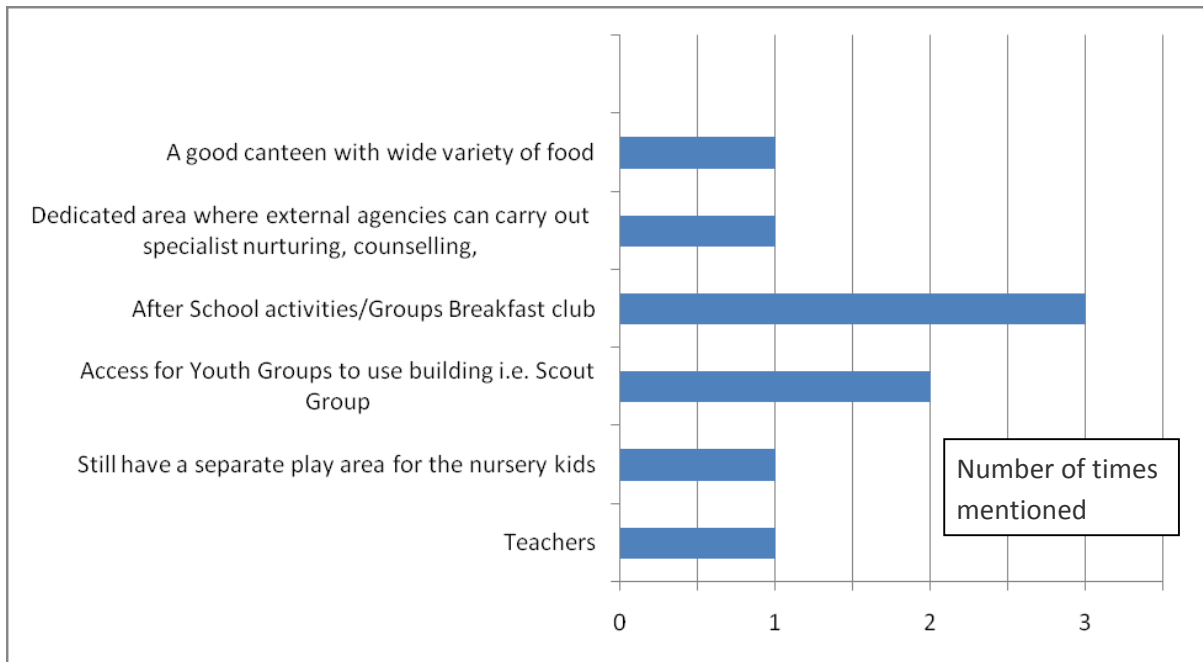
Again many of the items currently present in the school were agreed as a must in the new school with sports hall and playing fields coming out on top. Most people ticked all of the available selections as shown in Chart 5.

Chart 5: Items currently available, which should be in the New School



This again was only half the story as other current facilities and items were suggested as necessary inclusions to the new building. The Breakfast Club and after school activities and the use of facilities for other groups such as Scouts were cited as important services to be transferred to the new school.

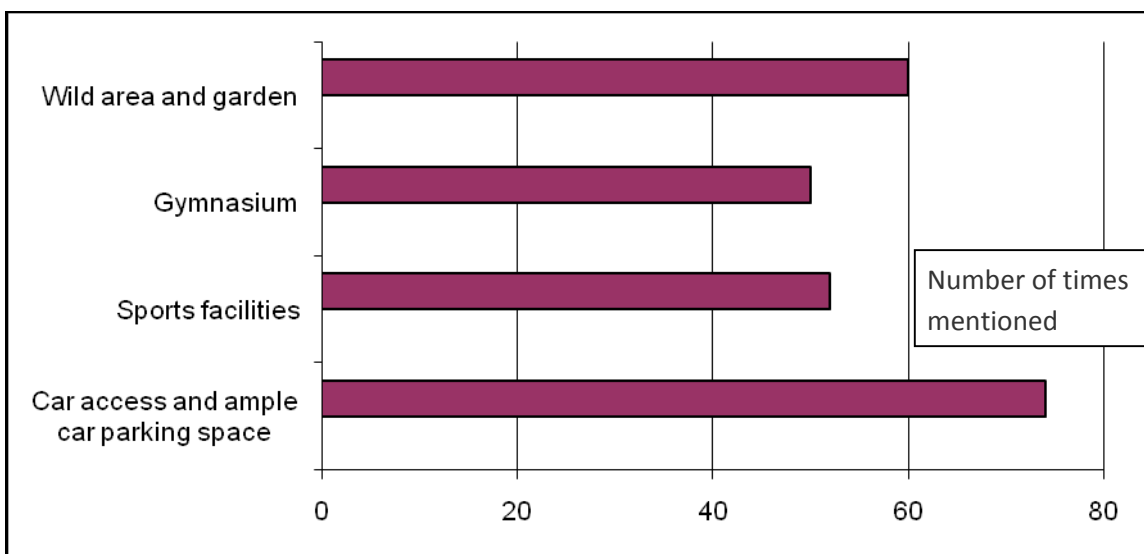
Chart 6: Other Items currently available, which should be in the New School



Q3. What has your school NOT got now that the new one SHOULD have?

In chart 7 we can see that car access and ample car parking space was a clear priority for the new school, but interestingly a wild area and garden was also popular with some suggestions of involving the wider community in the garden. Opportunities to learn more about the environment were also promoted, as was a seated area to be able to enjoy the outdoors.

Chart 7: What should be included the New School



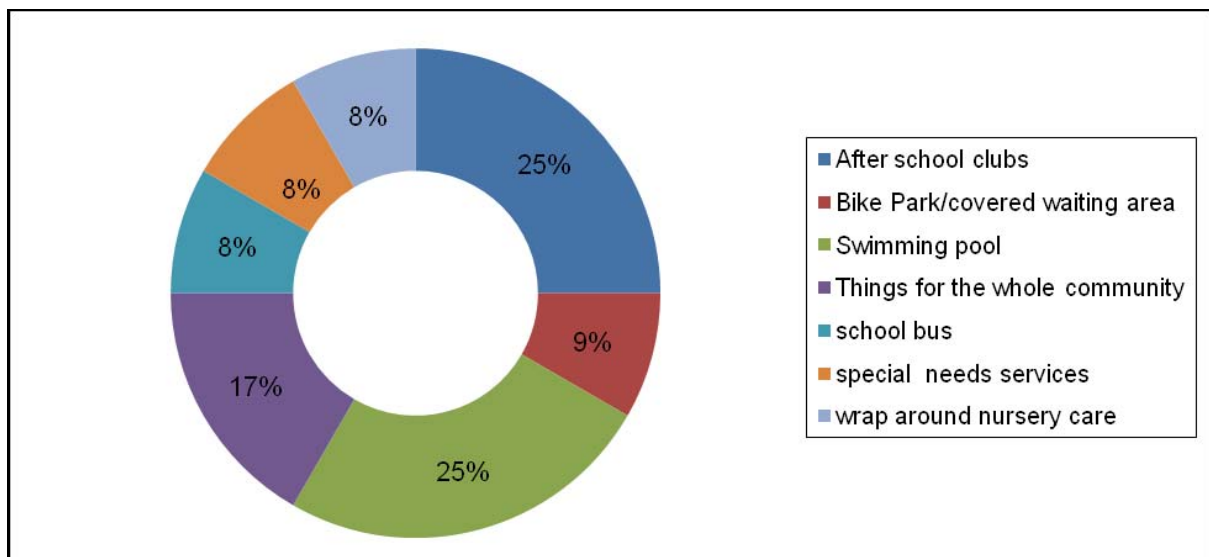
Other things were suggested that did not appear in the selection list as seen in Chart 8 below.

After-school clubs shared joint popularity to a swimming pool. It was felt that a whole range of clubs and activities could take place after school. Those suggested were: -

- Cooking
- Music
- Sports
- Arts and Crafts

Things for the whole community were also prominently featured in this section of suggestions, one resident said “the school is the heart of the community” and that they did not want to lose the sense of community that is already present.

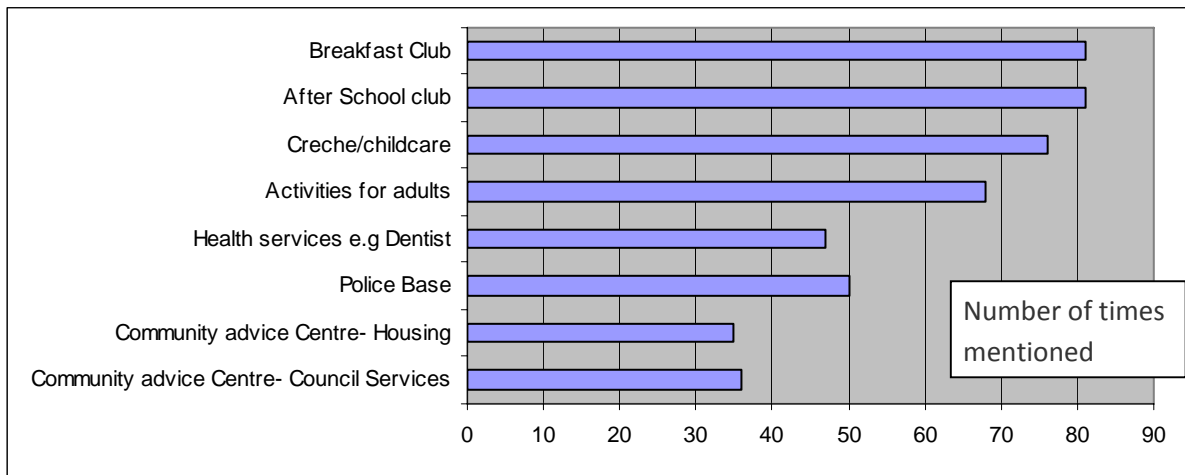
Chart 8: Other suggested inclusions for the New School



Q4. What other services, (extended services) would you like to have in the NEW school?

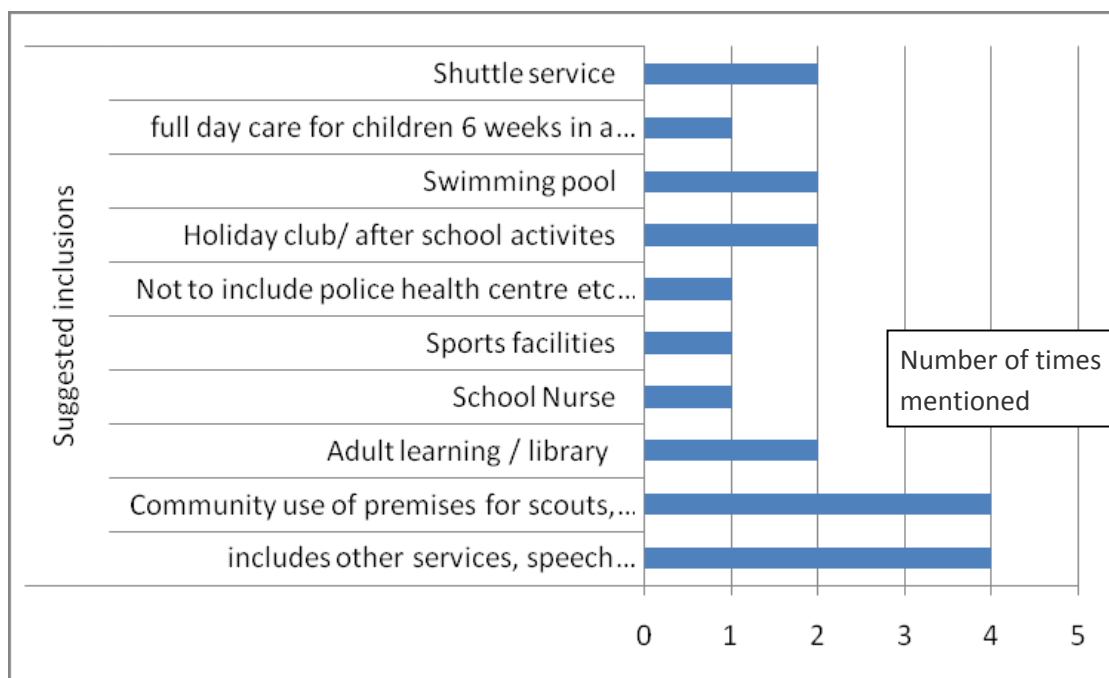
Extended services were prominent in this section, and there was suggestion for a crèche or childcare. A local business made a proposal to staff and run such a facility for children aged 6 weeks upwards. A Police base was quite popular as was health services.

Chart 9: What other services would you like in the New School



In Chart 10 respondents suggested that the school should be utilised for community groups such as Scouts. Others felt that specialist services should be accessible at the school like speech therapy, nit nurse and other similar services.

Chart 10: Other suggested services to the new school



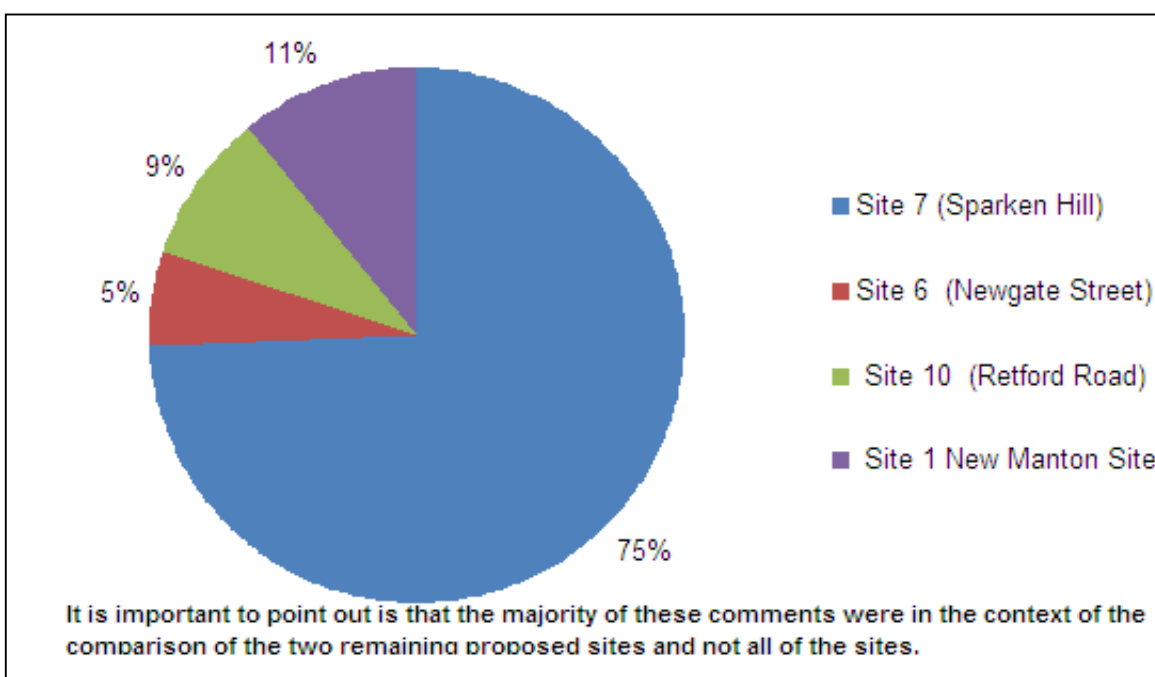
Q5. What potential difference do you think this NEW school will make to you and your community?

This question was not available to all respondents so it is hard to deride a clear consensus from the results but of those who did respond 42% reported a clear positive difference to the community. However there was 10% who thought it would have a negative impact to the community. There was over 38% who gave an indecisive answer. Many of these would have become positive if their concerns were addressed.

Q5. What is your opinion about the proposed site/s for the new school?

This section undoubtedly had the greatest number of comments, which fell into two directions. Those reporting positive views about all of the sites not just the two preferred sites that Nottinghamshire County Council identified and those who wished to raise particular problems with the sites proposed. Hence this section has been divided so that each set of data can be given the due attention necessary. Chart 11 below clearly shows that the majority of the positive comments were given about to the Sparken Hill Site (No.7). However what is important to point out is that the majority of these comments were in the context of the comparison of the two remaining proposed sites and not all of the sites. (See Appendix 3 - Page 32) A few people did comment positively about other sites being more suitable and the next most commented site was New Manton School (Site 1). Those who gave the comments suggested that it was a waste of resources not to build on this site. The other site mentioned as a good site was site No.10 on Retford Road.

Chart 11: Positive comments about all sites



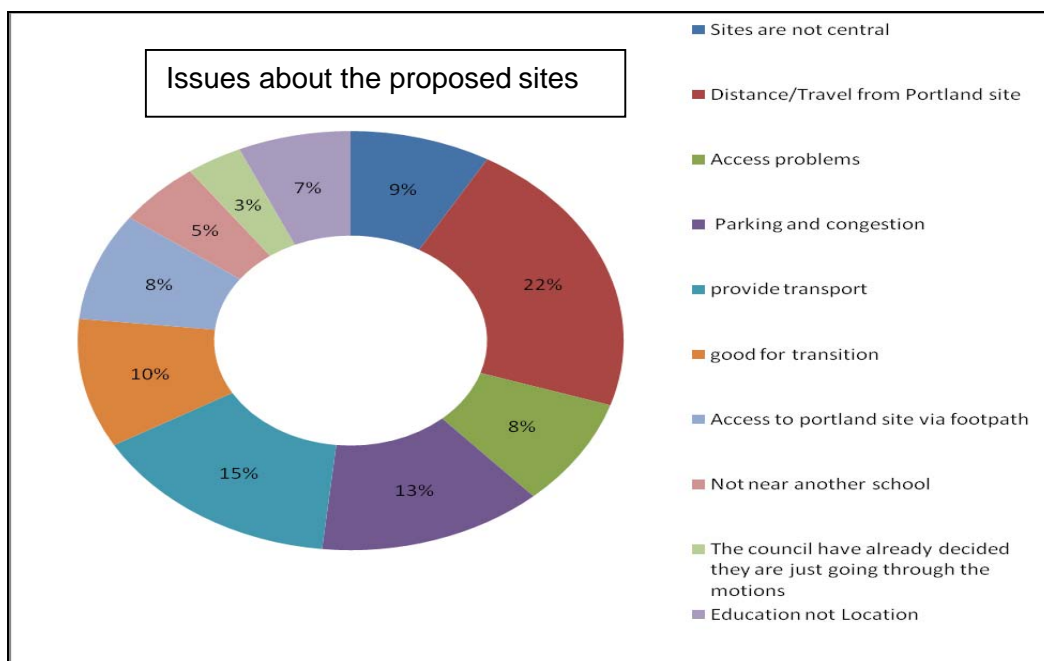
The other set of comments about the location were much more focussed on Nottinghamshire County Council’s preferred sites (Sites 6 and 7) and were far reaching from the stand point that “*the Council had already made all the decisions*” through to the distance between some of the residential areas and the proposed sites especially Site No.7. Other views expressed were: -

- Queries over accessing the site from the Manton side for those walking to school.
- Transport availability and parking.
- Location was not an issue the emphasis should be on the quality of education
- Residents voiced concerns about congestion, pollution and anti social behaviour.

In chart 12 the discussion around distance and transport accounts for 40% of the views. It is further considered when the discussion broadens out to parking and congestion. There were questions around the centrality of the preferred locations especially site No.7 and accessing the site from the east side where a large proportion of children currently live. More parents thought that being near Portland School would benefit children through transition, compared to those who did not want the school near another school. Parents and staff of Priory C of E School were keen to point out the problems of access if the school were built on site No. 6.

Chart 12 shows only a small proportion of those who completed the survey believe the Council was only going through the motions and had already made all the key decisions. However many people who chose not to complete the survey when spoken to during the engagement process echoed this belief.

Chart 12: Issues about Nottinghamshire County Council’s preferred sites



Written Responses

To gain an idea of the range and diversity of views being voiced in the community, a selection of the comments has been chosen. Please note that these are comments from different sections of the community and are to highlight the coverage gained by the engagement process. A full list of all the comments provided is available in the appendices.

A parent from Ryton Park Primary

“I think the Portland/Hartland site is the best one. I would like the school to be put there keeping all the schools altogether is a great idea. I would be very pleased if it was there.”

A parent from Ryton Park Primary

“It will bring all Manton kids together”

A parent from Ryton Park Primary.

“This is not just about the location of the school, the whole idea of a school this size is wrong and you have completely passed over that debate. You might have an opinion but I have a vested interest. This is my children's education and ultimately their future. I'm not going to gamble with that.”

A parent from Ryton Park Primarily

“I don't think the site of the school is important as long as it provides the education and service the children and community deserve.”

A Resident

“ Has any consideration been given to spending some funds on upgrading the existing sites (rebuild if necessary)? As for the options, the existing Manton site (1) is certainly more central than the Portland site, which lies on the boundary of the town's development envelope, and would serve no-one south of the site. The cost of demolition listed as a reason for ruling out site 1 is irrelevant as the cost of demolition would in any case reduce the residual land value.”

A parent from Ryton Park Primary

“How can they even think about the old Portland/Hartland Site? They are not thinking about the children or the parents. This is because it is way too far for children to walk. Even if they put transport on parents like to see their children go into school and to know that they are safe.”

The Adult and Community Learning Service

“ Our experience has shown that schools are a really valuable community setting for delivery of learning provision, some great work has been done in schools and we want to ensure that this can happen in the New Ryton Park.”

A Manton resident

“A school should be the heart of a community”

A Sparken Hill Resident & Parent of Holy Family Primary School.

“Three schools in this area would just be too much for traffic, congestion & litter. And after living here for 25 years I should know just how bad it can get.”

A Service Provider

“Initial work should encourage and engage local community involvement and everyone in the community should be encouraged to share a sense of ownership. It will give a feeling of pride to all members of the community”

A parent from Ryton Park Primary

“I think the Old Portland Site would be the best site. It will get the younger kids use to the bigger kids and prepare them for moving onto the Portland.”



Recommendations:

This exercise has shown that a new school is not just important to parents and pupils but to the wider community. The following recommendations are based on the evidence gathered through this engagement process.

| |
|--|
| <p>1. A commitment to continue to involve the community in every stage of this project.</p> |
| <p>2. Respond to the issues raised and inform the community with the decisions and the basis for the decision-making.</p> |
| <p>3. Seek views of organisations and service providers in the community and listen and reflect. Build on the initial views given by organisations and Service Providers</p> |
| <p>4. Planning for Real. Involve the school and wider community in the design of the building, allowing people to genuinely influence</p> |
| <p>5. Where possible encourage community ownership.</p> |
| <p>6. Inform residents of elected site to minimise any misunderstandings and inconvenience.</p> |
| <p>7. Design a new catchment map showing the location of homes where current pupils live.</p> |

Next Steps

On 21st & 23rd April there will be visioning days held where the architect and Project Manager will be providing information about what happens next.

Feeding back to people that have taken part in the process, through various ways for example MCA Newsletter, Nottinghamshire Community News, Worksop Guardian, School Newsletter, School Websites, MCA Website and also sending feedback to all participants, explaining about which location has been chosen and the reason for this decision.

Establish and maintain an open line of honest communication between Nottinghamshire County Council using Manton Community Alliance as a conduit.

Reply to all who took part, thanking them for participating and inform them of what will happen and how they can see results and responses to their questions

The community can continue to ask questions and access information through the web page www.mantoncommunityalliance.org.uk. There will be regular updates and answers to the questions raised.

If you have any questions or require further information about this report

Contact

Alister Shaw, Deputy Pathfinder Manager
Manton Community Alliance

Email: Alister.Shaw@MantonCommunityAlliance.org.uk
Office Tel: 01909 535193
Mobile: 07768008527

Alister Shaw
Manton Community Alliance
12 Edinburgh Road
Manton
Worksop
Notts. S80 2UD

www.MantonCommunityAlliance.org.uk

Appendices

Feedback from the Information Evening at The Crossing

| Question Posed | Responses from Consultation |
|--|---|
| <p>Things you like about the two proposed Sites</p> | <p style="text-align: center;">Sparken Hill</p> <p>Sparken Hill is historically children from both catchments have accessed Secondary education on this site.</p> <p>Portland is central in Catchment area</p> <p>Sparken Hill works for older children</p> <p>Sparken Hill best site for maximum money to be spent on children and facilities for them</p> <p>Older siblings can bring and take them to school</p> <p>Space and green fields</p> <p>Central to both existing schools</p> <p>Open playing fields</p> <p>Clean green sites</p> <p>Perfect Site</p> <p>Good Access</p> <p>Access for cars and walkers</p> <p>Plenty of space for building and play facilities</p> <p>Closer contacts with secondary continuity of education</p> <p>Traffic calming already in place</p> <p>All schools together</p> <p>No demolition costs</p> <p>Do not need to travel through or across town</p> <p>Fresh start for both schools</p> <p style="text-align: center;">Newgate Site</p> <p>Not near Comprehensive school</p> <p>Central to conurbation</p> <p>More Central</p> |

| | |
|--|--|
| | <p style="text-align: center;">Other Sites</p> <p>We like the position of the Viyella Site</p> <p>Radford Street is best location easy walking distance</p> <p>Quality of education before location</p> |
| <p>Things you would like to influence</p> | <p style="text-align: center;">Educational</p> <p>Camping Opportunities</p> <p>Quality of education</p> <p>Weekly web cast by pupils</p> <p>Spend less money on the school structure and more on equipment</p> <p>Activities Drama to be held</p> <p>What is available in the school?</p> <p>Grow its own food</p> <p>3D Plants</p> <p>3D Electric Sensory Textiles</p> <p>Countryside rural crafts e.g. fencing and archery.</p> <p>Music room craft room.</p> <p>Hands on library 3D Human Body</p> <p>Education of the children to achieve maximum potential.</p> <p style="text-align: center;">Design</p> <p>Gymnasium Sports field Solar Panels Wind generation.</p> <p>Design</p> <p>Are the classrooms bigger so we can squeeze more children into one class?</p> <p>How will the children be involved in the planning of the new school?</p> <p>Classrooms outdoors for hands on science e.g. rockets go karts water mills</p> <p>Kids naming the school</p> <p>Uniform</p> <p>Inclusion of site manager accommodation</p> <p>Swimming Pool</p> |

| | |
|--------------------------------------|--|
| | <p>Must be sustainable as possible</p> <p style="text-align: center;">Extended Services</p> <p>After School facilities for e.g. Scouts</p> <p>What is available extended services</p> <p style="text-align: center;">Community Services</p> <p>Community Cinema</p> <p>Will there be capacity for extended at the School to make it a real community asset</p> <p>As long as school provides what the community needs it does not matter where it is</p> <p>Add the play forum to the school</p> <p style="text-align: center;">Transport/Parking</p> <p>Can the buses be redirected and re timetabled to get to the school.</p> <p>Transport</p> <p>School buses and parent parking</p> <p>Both sites are a long walk from the Children's Centre not giving parents time to access services whilst their children are in school.</p> <p>Portland is too far if you have kids there for half a day and others to collect after as well.</p> <p style="text-align: center;">Other</p> <p>Too close to the big lads at Portland.</p> <p>Will place be hijacked by pupils now going to St Anne's because of all the facilities it will offer?</p> |
| <p>Questions and Comments</p> | <p>Can Parents visit the new school Pre open day?</p> <p>Plot of land (playing Fields) on Netherton Road</p> <p>Transport for Parents/Kids who walk</p> <p>If the school is not within walking distance will school transport be provided?</p> <p>Why can't we put up 'disadvantages' of favoured sites?</p> <p>Will catchments area change?</p> <p>Is the bottom of Portland School field too close to Priory Site?</p> <p>How will the transition of children happen especially for year 6 children who are already facing changes?</p> |

| | |
|--|--|
| | <p>Will you have a new name and new uniform?</p> <p>Can we sell the old site to help fund new site?</p> <p>New facilities that will inspire children to want to learn- raise aspirations.</p> <p>Parking and Driveways</p> <p>Does it make sense to have primary and secondary school together?</p> <p>What will be provided for Foundation Stage parents?</p> <p>Will there be extended sessions that they can use courses. Whilst their young children have there free nursery ½ day</p> <p>Can we use local businesses to help construct fit and equip the new school?</p> <p>Does it make sense to have Primary and Secondary Schools together?</p> <p>Lincoln/Radford Street Sites are the best locations i.e. central</p> <p>What will the maximum amount of children will the new school take what about future population expansion?</p> <p>Portland Access from Manton?</p> <p>Vehicle drop off in Bus Park Netherton Road for Manton Side.</p> <p>Pru site is better location than old Portland site but still too far for children to walk.</p> <p>Viyella Brownfield site & Decontamination costs</p> <p>Bassetlaw Learning Centre</p> <p>Highways widening not really viable</p> <p>Bassetlaw Learning Centre</p> <p>Demolition costs?</p> <p>Disabled Access?</p> <p>This is about Children and not Politics.</p> <p>Community Support</p> <p>Will it be ecological?</p> <p>Would school entry and leaving times be staggered (too many cars)?</p> <p>Primary children being influenced by the comprehensive children is this a good thing?</p> <p>What will happen to the Sports Hall at Manton?</p> <p>Sooner the better</p> |
|--|--|

Appendix II

Plan of Engagement Process

| Date: | | Events: |
|--------------------|--|--|
| 18-Mar-09 | | Information Event at The Crossing |
| 20-Mar-09 | | Planning |
| 23-Mar-09 | | Design and production of engagement tools |
| 27-Mar-09 | | Design Website for School Engagement and Information (Site Info / FAQ / Survey) |
| 30-Mar-09 | | Viewpoint Stand - 3pm South Avenue Playground |
| 30-Mar-09 | | Letters ready to go out (Address Labels from School) |
| 31-Mar-09 | | Viewpoint Stand - 11.20am Nursery, 12.40pm Nursery, 3pm Playground Memorial Avenue |
| 01-Apr-09 | | Viewpoint Stand - 9am Nursery, 3pm - Nursery Kingston Road - Manton Site |
| 01-Apr-09 | | SMS from school to parents to promote website and survey (Arrange with School) |
| 03-Apr-09 | | Engagement Letters sent home with Pupils - Schools break up/ Easter parade kids from both sites town centre. |
| 03-Apr-09 | | Easter Parade in Town Centre |
| 04-Apr-09 | | Manton Easter Fun Day/ Park opening |
| 04/04/09- 17/04/09 | | Agency/ community view points/ website update |
| 17-Apr-09 | | Response deadline for free post surveys / 1st Draft of Report |
| 20-Apr-09 | | Schools are back |
| 21-Apr-09 | | Visioning Event - Memorial Avenue |
| 22-Apr-09 | | Stakeholder Reference Group South Avenue |
| 23-Apr-09 | | Visioning Event - South Avenue |
| 24-Apr-09 | | End Date for this phase of engagement |

Questionnaire



RYTON PARK PRIMARY – NEW SCHOOL BUILDING

FIND OUT WHAT'S HAPPENING AND HAVE YOUR SAY

Earlier this year, two local primary schools merged to become one school – Ryton Park School. Currently, Ryton Park School is located at two sites – Memorial Avenue and South Avenue.

There are now plans to build a new school on one site. This is one of the most important developments affecting local children's primary education for many years, so it is crucial that you are given the opportunity to say what you think about the plans.

Manton Community Alliance is acting on your behalf to give the wider community an opportunity to have a say.

Your opinions are crucial so please take a little time to tell us what you think

PLEASE FILL IN THIS SHEET AND RETURN TO MANTON COMMUNITY ALLIANCE
Freepost SF10408, C/o Queens Buildings Post Room, Potter Street, Worksop, S80 2AH

OR YOU CAN DO IT ONLINE AT www.MantonCommunityAlliance.org.uk

MUST BE RETURNED BY 17th April 2009

What should local people be able to influence (or have a say in) about the NEW school?

Please tick all you agree with

| | |
|--|--------------------------|
| Design of School | <input type="checkbox"/> |
| Transport arrangements to school | <input type="checkbox"/> |
| Uniform / Dress Code | <input type="checkbox"/> |
| School Meals | <input type="checkbox"/> |
| Physical Activities | <input type="checkbox"/> |
| Services or Facilities for the wider community | <input type="checkbox"/> |
| School Trips / Visits | <input type="checkbox"/> |

Other things you would like to suggest...

.....

.....

What have you got in your school NOW that you would like to have in the NEW School?

Please tick all you agree with

| | |
|--|--------------------------|
| Activity and Play Equipment in the play ground | <input type="checkbox"/> |
| Modern IT & Computer Facilities | <input type="checkbox"/> |
| Sports Hall | <input type="checkbox"/> |
| Sports Field / Playing Fields | <input type="checkbox"/> |

Please add other things you would like to suggest...

.....

.....



What has your school NOT got now that the new one SHOULD have?

Please tick all you agree with

- Car Access and Enough Space to Park
- Playing Fields and Sport Facilities
- Gymnasium
- Wild area and garden

Other things you would like to suggest...

.....
.....

What other services (Extended Services) you would like to have in the NEW School?

Please tick all you agree with

- Breakfast Club, After School Club, Childcare
- Activities for the wider community around the school
- Health Services e.g. Dentists
- Police Base in the Community
- Community Advice Centre – Housing, Council Services

Other things you would like to suggest...

.....
.....

What is your opinion about the proposed site/s for the NEW school? (See next page)

.....
.....
.....
.....

Please fill in your name and details so we can keep you up to date and to show the range of people who are giving their views to make this the best possible school.

Name:

Address:

Postcode:

Telephone:

Email:

Age Range: 18 or under 19-30 31-50 51-64 65 +

Gender: MALE FEMALE

IF YOU ARE NOT HAPPY FOR US TO USE YOUR INFORMATION TO KEEP YOU INFORMED ABOUT WHAT IS HAPPENING PLEASE TICK THE BOX

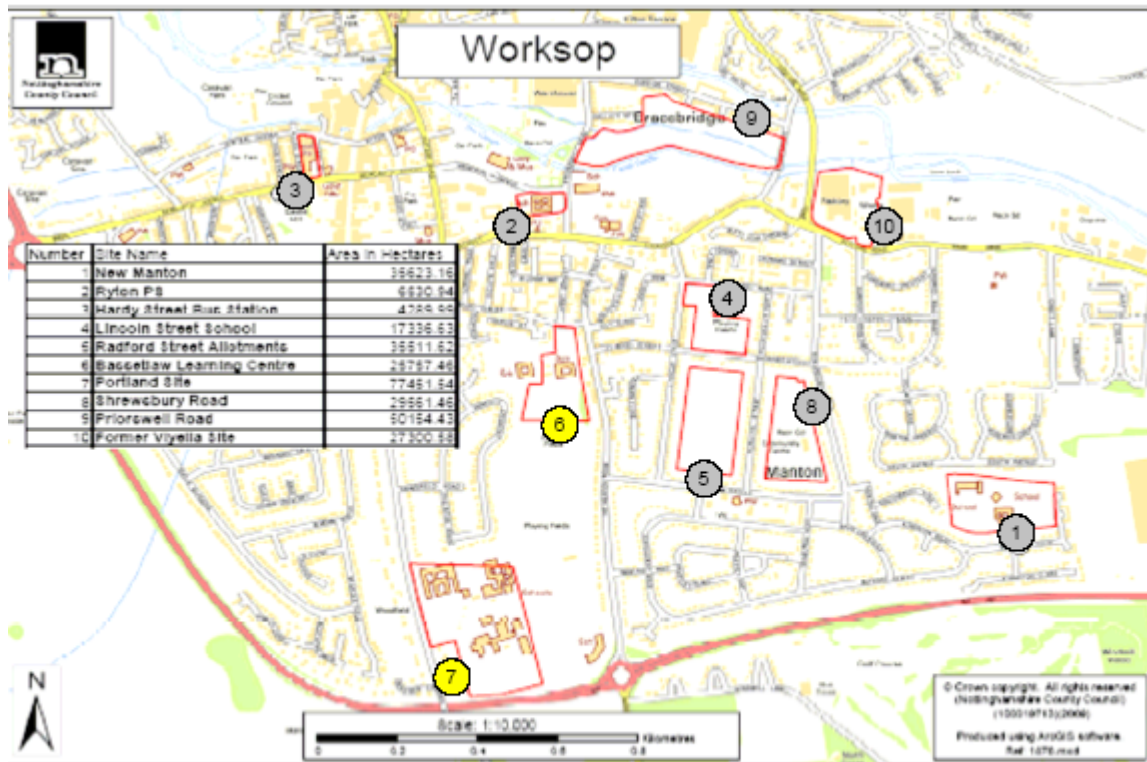
CUT OFF AND KEEP THIS PAGE FOR YOUR INFORMATION

WHERE WILL THE NEW SCHOOL BE BUILT???

Nottinghamshire County Council is legally responsible for choosing the best site and so far 10 sites have been considered. The right site has to meet certain requirements (See back page)

| | SITES CONSIDERED | RULED IN OR OUT | REASONS FOR DECISION |
|----|---|-----------------|--|
| 1 | Ryton Park - South Avenue (35,823m ²) | OUT | Not Central, Access Problems, Cost of Demolition |
| 2 | Ryton Park - Memorial Avenue (8,530m ²) | OUT | Too Small |
| 3 | Hardy Street Bus Station (4,289m ²) | OUT | Too Small |
| 4 | Lincoln Street School site (17,336m ²) | OUT | Site would be cramped - split site for playing fields |
| 5 | Radford Street Allotments (35,511m ²) | OUT | Sorting out Access & Ownership would be a time risk |
| 6 | Bassetlaw Learning Centre (25,757m ²) | IN | OK but next to Priory so access could be a problem |
| 7 | Old Portland/Hartland Site (77,451m ²) (Sparken Hill) | IN | Meets all but one requirement (Not Central) Would need access to/from Manton to address this |
| 8 | Shrewsbury Road (29,581m ² - total site) | OUT | Too small with Children's Centre & Park Development |
| 9 | Priorswell Road (50,154m ²) | OUT | Risk of Flooding – on floodplain |
| 10 | Former Viyella Site (Hosiery) (27,300m ²) | OUT | Cost of buying site, demolition and decontamination |

Below is a map showing the sites Nottinghamshire County Council has considered



The New school site needs to be

- Big enough for up to 630 pupils. (Ideally 29,000m²)
- In the middle of catchment area (walking distance)
- Have good access for cars and pedestrians
- No Planning Restrictions
- Ideally on land owned by the County Council. (No extra money to buy land)
- Minimum site preparation costs (demolition etc.)
- A single flat site for school and the play areas.

There is £8.4 million available to build the new school to be ready by the end of 2011

***OPEN DAYS TO HELP DESIGN THE NEW SCHOOL
WILL BE HELD ON***

TUESDAY 21ST APRIL AT RYTON PARK – MEMORIAL AVENUE

AND/OR

THURSDAY 23RD OF APRIL AT RYTON PARK – SOUTH AVENUE

Everyone is welcome so come and have a say

**TO FIND OUT MORE CONTACT
MANTON COMMUNITY ALLIANCE
ON 01909 535193**

OR GO TO

www.MantonCommunityAlliance.org.uk

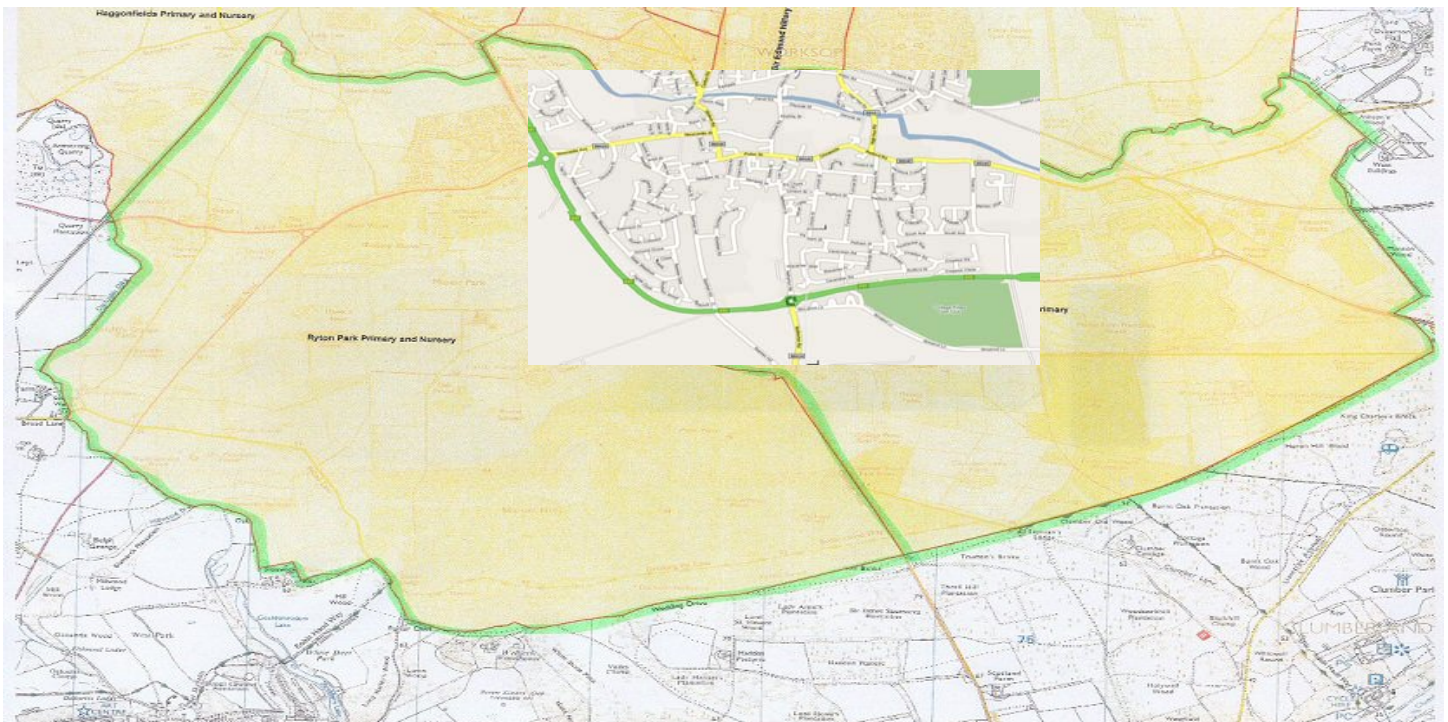
TO HAVE YOUR SAY AND KEEP UP TO DATE

Maps

Arial view with all ten sites identified



Map of the catchment area



Written Comments

What potential difference do you think this NEW school will make to you and your community?

Positive Comments

- Children will be able to learn in an up to date environment with access to up-to-date resources and equipment.
- Initial work should encourage and engage local community involvement and everyone in the community should be encouraged to share a sense of ownership
- It will give a feeling of pride to all members of the community
- Hopefully it will be beneficial
- Because it will bring all Manton kids together
- It should do well to have a good school for the little ones
- Hard to visualise potential problems
- Manton should welcome this development as an opportunity to experience and embrace new beginnings and a step forward towards a positive collective community
- Positive potential for better facilities for the wider community.
- A new purpose built school built at one of the outlined sites will offer the surrounding community with a much needed modern 'fresh' facility

Negative Comments

- Negative traffic problems
- I am a resident of Sparken Hill and do not want another school as my neighbour, due to lots of reasons, please see below for further details.
- Don't have any children at the current school
- Hartland/Portland has been a two school site for years, why change it when space is there for more school use.
- A chance to think through all the problems and solutions to multi use, co-location of wider support agencies

What is your opinion about the proposed site/s for the new school?

Site 7 Sparken Hill

- If it is on Sparken Hill this is a big site so will have enough room for everything, but it is a long way for families who don't have cars. I don't think anyone will use the school after hours because it is too far from where people live. I think the old Viyella Site would be better for everyone and you could pay for it by selling the old school sites or the land on Sparken Hill.
- Old Hartland Site is too far away from Manton and does not suit the community needs. IS it really necessary to have one site? It is a waste of resources not using the existing Manton Site.
- How can they even think about the old Portland/Hartland Site? They are not thinking about the children or the parents. This is because it way too far for children to walk. Even if they put transport on parents like to see their children go into school and to know that they are safe.
- I think the Old Portland Site would be the best site. It will get the younger kids use to the bigger kids and prepare them for moving onto the Portland. Maybe make transport available, to get to and from school.
- There will be more room for the children to play and that is very important.
- Old Portland site sounds great not fat to get there and will be better for when kids leave juniors and go to Portland. Sounds great!
- Too far from current address. Extremely difficult in bad weather if no transport available
- The only problem I have with the proposed sites is the distance I would have to travel to the old Portland site. I have no transport and I don't like the idea of walking with my daughter in bad weather, a good 25-minute walk. Surely the school should be built close to where it is now as to not disrupt a lot of people.
- I think that Sparken Hill would be the best location, as it has large areas for playing fields and good access
- The Sparken Hill is, is the best proposed area for me, simply because I think it is one of the best locations plus it will be a brand new start for both schools involved.
- Sparken Hill site provides a central point between old schools.
Close to town and countryside
- I think Sparken Hill site is a distance for both schools as Ryton has pupils from Kilton and Newcastle Ave area. I don't think the Bassetlaw site will have access problems as it has a separate drive through with plenty of frontal space for cars
- I think the proposed Sparken Hill would be best for all persons involved. There is public footpath at side of Holy Family School. Could put one from bus park for Portland

- Sparken Hill is probably the better of the two as long as access can be agreed, as the Newgate street site could bring more traffic problems getting into and out of the new school and priory school.
- I think it's a good idea but a lot who live in the Villas wont walk with kids. I live on Netherton Road and my kids go to South Ave Manton School
- Well I think the new sites are too far for the Manton Children to travel to school
- It is actually quite good and it should be a really good school
- Its a good idea for it to be on the Sparken Hill site
- Good
- Good Sparken Hill Site
- Sparken Hill is the best site if transport provided
- It would be Sparken Hill more room
- If Sparken Hill site it not good for all young kids so walk that far but more absent if kids have that far to travel
- Crap too far away for little kids to walk.
- Sparken Hill site seems the only logical area for the new school which fits the majority of the criteria, with a minimal amount of work to be done regarding road access to the site
- Needs good access from Manton or kids will have to cross-bypass or have a long walk through town in the morning. Drop off times will be chaos on Portland site with 3 schools at same time
- Too far away for me.
- Nice and big
- Excellent choice, but restricted to access
- Sparken Hill site is big enough for all things that it needs. It also has a big field for kids to play on without being stopped by cars or roads
- I think the Sparken Hill site would be best better access bigger site.
- Portland Site seems to be the best and most convenient site, especially for year 6 pupils who will be moving on
- Sparken Hill site to ensure facilities new schools required can be provided. Excellent site for transition from primary to secondary. Good road access and large enough for transport close enough to housing. Reduced congestion, which would affect Priory school site if site of learning centre were considered.
- I feel that the proposed site at Sparken hill would be preferable. Lots of children from Manton could access the old Portland site before the rebuild, if provisions were put into place that children could have a safe access rout through to Sparken hill there wouldn't be a problem. I feel also that the transition from Primary to Secondary buildings would benefit. There would also be great potential for both primary and

secondary buildings to work together and in turn with the community.

- Beside an already established Primary School seems completely illogical due to all the problems it would cause congestion, parking facilities- The Portland site is the logical choice
- Sparken Hill site is perfect as it already has fields larger parking facilities in place
- As a resident on Sparken Hill, would not be happy that the new school maybe built on the old Portland/Hartland site. Three schools in this area would just be too much for traffic, congestion & litter. I have a 4 year old that currently attends Holy Family and a 2 year old that will be joining him shortly. If a member of the council would like to spend some time at the schools entrance to the car park and see what an absolute nightmare it is at the moment, and to have an entrance (which I presume would be the empty land right next to the Holy Family car park) for ANOTHER 650 pupils to attend the school would be just ludicrous. And on the Sparken Hill entrance would be just as bad, cars parked either side of Sparken Hill to pick up children, this in itself is a hazard. And after living here for 25 years I should know just how bad it could get.

My other concern for the proposed site at Sparken Hill is that it is not central enough to the Manton Community. I have spoken to various friends' acquaintances about this plan, and without sounding harsh, I have been told that the majority of Manton families will not be bothered to collect their offspring this far out of Manton, and they will end up wandering down Sparken hill into town on their own. Please don't think that this is my opinion only, I have spoke to a few people that work within the Manton community who have voiced these fears to me themselves! Also, do you really want children of this age to mix out of school with the older pupils from Portland? What if the families do not have a car? Do you think they will trudge up Sparken Hill to take their kids to school?

Another point I would like to make is if more people go to school on bikes up Sparken Hill, the new cycle path is an accident waiting to happen. I myself have, on numerous occasions, had a close shave with children on bikes who come racing up and down Sparken Hill without a care in the world. Yes I am careful when pulling out my drive, but no matter how careful I am I have had a few close misses.

- Favour Sparken Hill site
- Suggest shuttle bus or Walking Bus from Priory Church area.
- Parents with older children at Portland would appreciate one trip for children there and back
- Sparken Hill good as it is flat and does not need and buildings knock down.
- Traffic is already a problem in the Sparken Hill area. Another potentially 500+ cars is forced to exacerbate the problem
- Apparently only one option is viable, but it is not Centrally based. A communal Yellow Bus system (as in the USA) might prove to be the answer
- They are very close together priory and Portland there is not a lot in the central issue

and the Sparken Hill site in my opinion is the best site as all the services will be in one place.

- Out of the two sites I think Sparken hill is possibly the best. I think the Bassetlaw Centre although central would create a huge traffic situation on Newgate Street where as on Sparken Hill apart from Access from Manton end there wouldn't be traffic parked on the roadside.
- The last point I would like to make is purely a selfish one, living on Sparken Hill for the last 25 years, its my home, I do not want another school on my doorstep, for the past few years various hideous extensions (how on earth they have been passed I do not know) and schools, homes for bad children, and homes for Autistic children, Sparken Hill is not what it used to be, to say we are in Band E with all the cars, children etc would be a joke. A lot of people walk/bike up Sparken Hill on sunny days for a nice stroll, wouldn't the site on Sparken Hill be more beneficial to the Worksop people and the neighbouring schools as some sort of Park/Council run Nature plot? All schools in Worksop could spend time there and take part in various projects? It is a big space, more than twice as much as what is needed for the new school, put it to better use for the whole community.
- I think that the council has already decided on the site and just going through the motions of getting the community involved with regards to school location.

Site 6 Bassetlaw Learning Centre Newgate Street

- Has a school governor at Priory school I totally object to the school being built next door, we have traffic issues on Newgate Street without causing more with double the traffic from another school.
- Bassetlaw learning centre would make Newgate Street very dangerous. There is not enough play fields and it's too close to Priory. Car parking would be terrible.
- Excellent choice, but restricted to access
- Site 6 is too close to Priory School, where there is already traffic congestion at school drop offs.
- Bassetlaw Learning Centre site would create traffic congestion including building work congestion for Priory pupils.
- No.6 if it's next to the Priory why not join school to one big one.
- To me the best plot would be Bassetlaw Learning centre, mainly because of its location, its central to Manton which is what is needed, as for saying that this site is OK but access could be a problem, then again I ask you to assess the entrance next to Holy Family school and Portland and see if you still think its a good idea to put it on Sparken Hill.

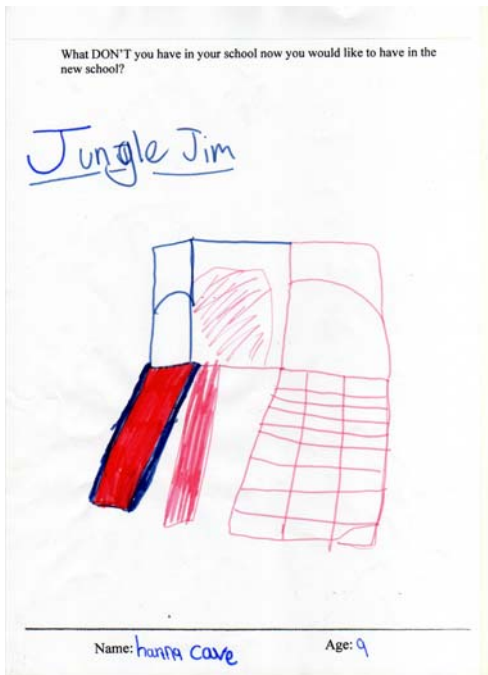
Other Sites

- I don't think the site of the school is important as long as it provides the education and service the children and community deserve
- I think Retford Road (site 10) would have been better
- I think it's a pity that both "in" sites are outside Manton but at least the sites are near Portland, which can be very beneficial. There are other facilities developing in Manton on the Shrewsbury Road Site, which could encompass a community advice centre, health etc.
- It should be in a better area so all children should be in walking distance and should be near no other school.
- Stay where it is just extend
- Stupid should be site 1 (South Avenue)
- It should be site 1 South Avenue as the sites highlighted not central
- Should be Retford Road at Viyella so easy for Kilton and Manton Access
- Don't want too walk far
- They will put it where they want it no matter what is said
- I think it shouldn't matter as long as my child gets the education she deserves
- Personally the site doesn't really make any difference to me, as long as my child gets a good education from school. But the Radford Street allotments or the old coats viella site would have been excellent to be redeveloped, to re-generate the local area (killing 2 birds with 1 stone)
- Not many to chose from
- Has anyone questioned why there is a need to continue with the merged schools? As I understand it, they were merged to attempt to improve Manton's standards, by utilising the excellent management staff of Ryton Park. The combined school will be having almost twice the pupils as any other Primary in Worksop. Why is there a need to combine & relocate the school? By doing so, the catchment areas of this and other schools will change. Has any consideration been given to spending some funds on upgrading the existing sites (rebuild if necessary)? As for the options, the existing Manton site (1) is certainly more central than the Portland site, which lies on the boundary of the town's development envelope, and would serve no one south of the site. The cost of demolition listed as a reason for ruling out site 1 is irrelevant, as the cost of demolition would in any case reduce the residual land value. Indeed the County has already funded the cost of demolition of the Hartland/Portland buildings (option 7). Sparken Hill would present considerable access problems, increasing traffic on Netherton Road, and Sparken Hill. A School Travel Plan has not yet been finalised for the Portland, despite it being a planning condition and the school having been operational for 16 months! The reasons for eliminating option 5 seem to be

excuses, as does those for option 9. Does the site area for option 6 include the unused tarmacadamed area, which was the site of the old Priory School? If not, it is a valuable space, which should be put to better use.

- Living close to Priory, obviously the would be more convenient for myself, but if adequate transport could be provided, I wouldn't disapprove of either site
- Doesn't really affect me not in my catchment area. Hopefully my son will be going to a school nearer to where we live.
- I believe it should be central for all pupils, be large and spacious with off road access to avoid congestion for non-school users. The Viyella site would be suitable. No. 6 is not suitable due to Priory School. Sparken Hill site may be suitable if it has access and parking.
- The site is not an issue, the new school will provide lots of potential for extended services which is our main concern

Entries for Picture Competition from Children



What DON'T you have in your school now you would like to have in the new school?

a wooden castle, that you can play hide and seek in.



Name: Harrison Swann Age: 6

What DON'T you have in your school now you would like to have in the new school?

~~inside school~~
inside ~~superhero~~
inside swimming pool



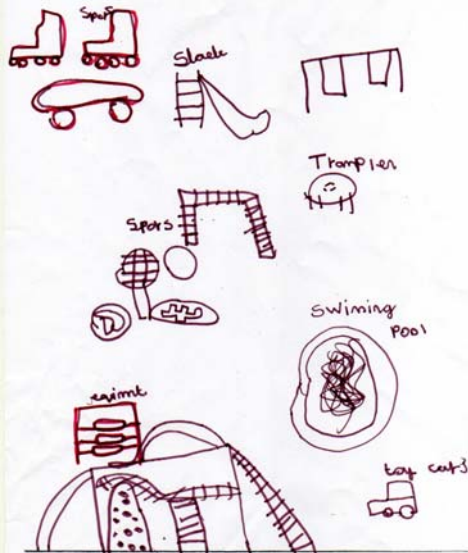
Name: Ailie Blackshaw Age: 3

What do you have in your school that you really like and would like to have in the new school?



Name: Samuel Nichell Age: 9

What DON'T you have in your school now you would like to have in the new school?

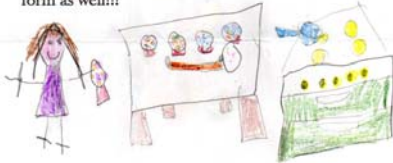


Name: Samuel Nichell Age: 9

YOUR NEW SCHOOL

If you could have anything in your new school what would it be?

Draw us a picture and you could win a prize
Send it back to us with your parents or carers
form as well!!!



Cooking Class

Name: Claire Scott
Age: 5
Class: F2
Ryton Park
Manton
Stc.

YOUR NEW SCHOOL

What is your favourite thing in your school?

Draw us a picture!!! And you could win
a great super duper Prize.



I like painting

YOUR NEW SCHOOL

If you could have anything in your new school what would it be?

Draw us a picture and you could win a prize
Send it back to us with your parents or carers
form as well!!!



Name: chelsea-lee power
Age: 5
Class: F2

YOUR NEW SCHOOL

What is your favourite thing in your school?

Draw us a picture!!! And you could win
a great super duper Prize.

